



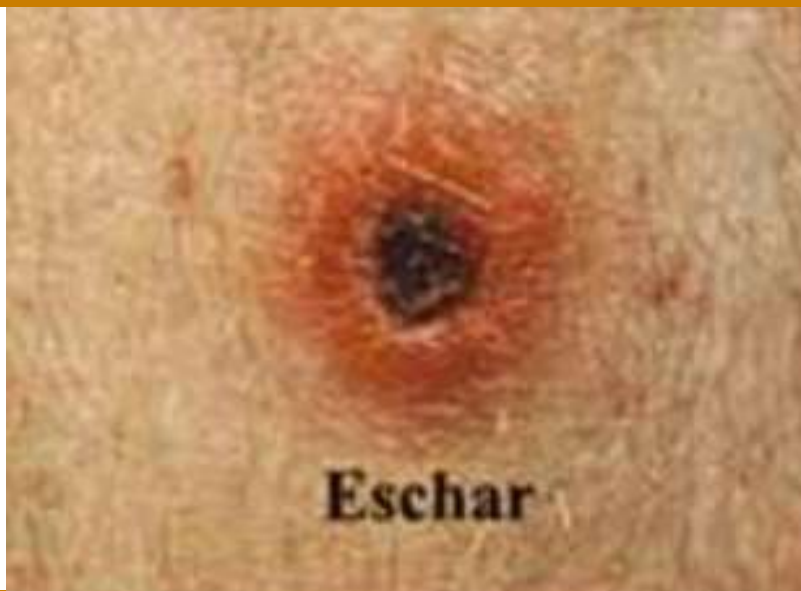
**NCDC**

Technical Support for Guidance  
and Providing Resources is  
Acknowledged



**CAHO**

Committed to Safer Healthcare



**ZOONOTIC DISEASES WEBINAR SERIES**

## **RICKETTSIAL DISEASES IN INDIA**

### **Rickettsial Infections Part I : Scrub Typhus**



Saturday, 28th December, 2024



6pm to 8pm IST

**REGISTER NOW**



## MODERATORS



### Dr Aparna Jairam

Chairperson Diagnostic Division  
Affiliation – CAHQ, IAPM, APPI  
Founder & Director, Asavlee,  
Dr. Aparna's Pathology Laboratories Mumbai



### Prof. (Dr) Ashok Rattan

Advisor / Consultant  
Affiliation - Redcliffe, NGIVD  
Mani Microbiology Labs  
New Delhi

## SPEAKERS



**Classification of Rickettsia & Their Biological Characteristics  
Future Research Needs In Typhus Group**

### Prof Rama Chaudhry

ICMR Emeritus Scientist  
Affiliation – Ex Dean – Research, Professor & Head Department of Microbiology, AIIMS, New Delhi



**History of Scrub Typhus In The World & India  
Laboratory Diagnosis Of Scrub Typhus**

### Dr Monil Singhai

Joint Director,  
Affiliation – Centre for Arboviral and Zoonotic Diseases (Formerly Zoonosis Division), NCDC, India



**Clinical Features & Differential Diagnosis of Scrub Typhus**

### Dr Sandeep Budhiraja

Group Medical Director  
Affiliation – Max Healthcare



**Epidemiology : Agent, Vector & Environment Factors**

### Lt Gen. R M Gupta

Prof. & Head, Microbiology  
Affiliation – ESIC Medical College & Hospital



**Laboratory Diagnosis Of Scrub Typhus**

### Dr. Madhuri Rathi Maheshwari

HOD and Consultant Microbiologist  
Affiliation – Molecular Division, Mani Microbiological Laboratory,  
Hyderabad/Telangana



**Clinical Management of Scrub Typhus**

### Prof. (Dr) Anupam Prakash

Director Professor & Head, Dept of Medicine  
Affiliation – Lady Harding Medical College & Associated hospitals, Delhi



**Vector Surveillance & Management Scrub Typhus**

### Dr Rina Tilak

Scientist 'G' (Retd)  
Affiliation – Armed Forces Medical College, Pune



**Outbreak investigations**

### Dr Nitin Gupta

Associate Professor, Infectious Disease  
Affiliation: Kasturba Medical College (KMC), Manipal



4th Edition 2025

**DIAGNOSTICON**

CAHQ

Rickettsial Infections Part II : Spotted Fever and Trench Fever



Saturday, 11th January, 2025



**REGISTER NOW**